



Andy Beshear
GOVERNOR

TRANSPORTATION CABINET

200 Mero Street
Frankfort, Kentucky 40601

Jim Gray
SECRETARY

March 19, 2024

CALL NO. 317
CONTRACT ID NO. 241102
ADDENDUM # 1

Subject: Warren County, FD04 114 0242 003-004
Letting March 21, 2024

Revised - Proposal Bid Items Pg.41-42 of 42
Revised - Plan Sheets: R2B,R4

Proposal revisions are available at <http://transportation.ky.gov/Construction-Procurement/>.

If you have any questions, please contact us at 502-564-3500.

Sincerely,

Rachel Mills,

A handwritten signature in black ink that reads "Rachel Mills".

Rachel Mills, P.E.
Director
Division of Construction Procurement

RM:ce
Enclosures

PROPOSAL BID ITEMS

241102

Page 1 of 2

Report Date 3/19/24

Section: 0001 - PAVING

LINE	BID CODE	ALT	DESCRIPTION	QUANTITY	UNIT	UNIT PRIC	FP	AMOUNT
0010	00003		CRUSHED STONE BASE	400.00	TON		\$	
0020	00100		ASPHALT SEAL AGGREGATE	13.00	TON		\$	
0030	00103		ASPHALT SEAL COAT	2.00	TON		\$	
0040	00214		CL3 ASPH BASE 1.00D PG64-22	590.00	TON		\$	
0050	00307		CL2 ASPH SURF 0.38B PG64-22	330.00	TON		\$	
0060	24970EC		ASPHALT MATERIAL FOR TACK NON-TRACKING	1.00	TON		\$	

Section: 0002 - ROADWAY

LINE	BID CODE	ALT	DESCRIPTION	QUANTITY	UNIT	UNIT PRIC	FP	AMOUNT
0070	00078		CRUSHED AGGREGATE SIZE NO 2	100.00	TON		\$	
0080	02014		BARRICADE-TYPE III	1.00	EACH		\$	
0090	02159		TEMP DITCH	525.00	LF		\$	
0100	02160		CLEAN TEMP DITCH	265.00	LF		\$	
0110	02200		ROADWAY EXCAVATION	736.00	CUYD		\$	
0120	02242		WATER	15.00	MGAL		\$	
0130	02429		RIGHT-OF-WAY MONUMENT TYPE 1	8.00	EACH		\$	
0140	02432		WITNESS POST	3.00	EACH		\$	
0150	02545		CLEARING AND GRUBBING 0.39 ACRES	1.00	LS		\$	
0160	02562		TEMPORARY SIGNS	200.00	SQFT		\$	
0170	02585		EDGE KEY	70.00	LF		\$	
0180	02603		FABRIC-GEOTEXTILE CLASS 2	300.00	SQYD		\$	
0190	02650		MAINTAIN & CONTROL TRAFFIC	1.00	LS		\$	
0200	02653		LANE CLOSURE	1.00	EACH		\$	
0210	02671		PORTABLE CHANGEABLE MESSAGE SIGN	2.00	EACH		\$	
0220	02676		MOBILIZATION FOR MILL & TEXT	1.00	LS		\$	
0230	02677		ASPHALT PAVE MILLING & TEXTURING	50.00	TON		\$	
0240	02690		SAFELOADING	6.20	CUYD		\$	
0250	02701		TEMP SILT FENCE	525.00	LF		\$	
0260	02703		SILT TRAP TYPE A	1.00	EACH		\$	
0270	02704		SILT TRAP TYPE B	1.00	EACH		\$	
0280	02705		SILT TRAP TYPE C	1.00	EACH		\$	
0290	02706		CLEAN SILT TRAP TYPE A	1.00	EACH		\$	
0300	02707		CLEAN SILT TRAP TYPE B	1.00	EACH		\$	
0310	02708		CLEAN SILT TRAP TYPE C	1.00	EACH		\$	
0320	02726		STAKING	1.00	LS		\$	
0330	04935		TEMP SIGNAL	1.00	LS		\$	
0340	05950		EROSION CONTROL BLANKET	1,865.00	SQYD		\$	
0350	05952		TEMP MULCH	1,105.00	SQYD		\$	
0360	05953		TEMP SEEDING AND PROTECTION	935.00	SQYD		\$	
0370	05963		INITIAL FERTILIZER	1.00	TON		\$	
0380	05964		MAINTENANCE FERTILIZER	1.00	TON		\$	
0390	05985		SEEDING AND PROTECTION	1,865.00	SQYD		\$	
0400	05992		AGRICULTURAL LIMESTONE	1.50	TON		\$	

PROPOSAL BID ITEMS

241102

Page 2 of 2

Report Date 3/19/24

LINE	BID CODE	ALT	DESCRIPTION	QUANTITY	UNIT	UNIT PRIC	FP	AMOUNT
0410	06406		SBM ALUM SHEET SIGNS .080 IN	12.98	SQFT		\$	
0420	06410		STEEL POST TYPE 1	24.00	LF		\$	
0430	06510		PAVE STRIPING-TEMP PAINT-4 IN	2,300.00	LF		\$	
0440	06514		PAVE STRIPING-PERM PAINT-4 IN	5,254.00	LF		\$	
0450	06547		PAVE STRIPING-THERMO-12 IN Y	196.00	LF		\$	
0460	06568		PAVE MARKING-THERMO STOP BAR-24IN	14.00	LF		\$	
0470	06574		PAVE MARKING-THERMO CURV ARROW	5.00	EACH		\$	
0480	21289ED		LONGITUDINAL EDGE KEY	1,042.00	LF		\$	
0490	22664EN		WATER BLASTING EXISTING STRIPE	1,035.00	LF		\$	
0500	24631EC		BARCODE SIGN INVENTORY	2.00	EACH		\$	

Section: 0003 - DRAINAGE

LINE	BID CODE	ALT	DESCRIPTION	QUANTITY	UNIT	UNIT PRIC	FP	AMOUNT
0510	00461		CULVERT PIPE-15 IN (REVISED 3-19-24)	96.00	LF		\$	
0520	00462		CULVERT PIPE-18 IN (REVISED 3-19-24)	53.00	LF		\$	
0530	01202		PIPE CULVERT HEADWALL-15 IN	2.00	EACH		\$	
0540	01204		PIPE CULVERT HEADWALL-18 IN	2.00	EACH		\$	
0545	00440		ENTRANCE PIPE-15 IN (ADDED 3-19-2024)	159.00	LF		\$	

Section: 0004 - DEMOBILIZATION &/OR MOBILIZATION

LINE	BID CODE	ALT	DESCRIPTION	QUANTITY	UNIT	UNIT PRIC	FP	AMOUNT
0550	02569		DEMOBILIZATION	1.00	LS		\$	

GENERAL SUMMARY

ITEM CODE	ITEM	UNIT	TOTAL PROJECT
0078	CRUSHED AGGREGATE NO. 2 (FOR STABILIZATION) ⑦	TON	100
2014	BARRICADE-TYPE III	EA	1
2159	TEMP DITCH	LF	525
2160	CLEAN TEMP DITCH	LF	265
2200	ROADWAY EXCAVATION	CU YD	736
2242	WATER	MGAL	15
2429	RIGHT-OF-WAY MONUMENT TYPE I	EA	8
2432	WITNESS POST	EA	3
2545	CLEARING AND GRUBBING ⑥	LS	1
2562	TEMPORARY SIGNS	SO FT	200
2569	DEMOBILIZATION	LS	1
2585	EDGE KEY	LF	70
2603	FABRIC GEOTEXTILE CLASS 2 ⑦	SY	300
2650	MAINTAIN AND CONTROL TRAFFIC	LS	1
2653	LANE CLOSURE	EACH	1
2671	PORTABLE CHANGEABLE MESSAGE SIGN ⑨	EACH	2
2676	MOBILIZATION FOR MILL & TEXT	LS	1
2677	ASPHALT MILLING & TEXTURING ⑤	TON	50
2690	SAFELOADING	CU YD	6.2
2701	TEMP SILT FENCE	LF	525
2703	SILT TRAP TYPE A	EACH	1
2704	SILT TRAP TYPE B	EACH	1
2705	SILT TRAP TYPE C	EACH	1
2706	CLEAN SILT TRAP TYPE A	EACH	1
2707	CLEAN SILT TRAP TYPE B	EACH	1
2708	CLEAN SILT TRAP TYPE C	EACH	1
2726	STAKING	LS	1
4935	TEMP SIGNAL ⑩	LS	1
5950	EROSION CONTROL BLANKET	SO YD	1865
5952	TEMP MULCH	SO YD	1105
5953	TEMP SEEDING AND PROTECTION	SO YD	935
5963	INITIAL FERTILIZER	TON	1
5964	MAINTENANCE FERTILIZER	TON	1
5985	SEEDING & PROTECTION	SO YD	1865
5992	AGRICULTURAL LIMESTONE	TON	1.5
6406	SBM ALUM SHEET SIGNS 0.080 IN	SO FT	12.98
6410	STEEL POST TYPE I	LF	24
2463IEC	BARCODE SIGN INVENTORY	EACH	2
6510	PAVE STRIPING - TEMP PAINT - 4IN	LF	2300
6514	PAVE STRIPING - PERM PAINT - 4IN	LF	5254
6547	PAVE STRIPING - THERMO - YELLOW - 12IN	LF	196
6568	PAVE MARKING-THERMO STOP BAR-24 IN	LF	14
6574	PAVE MARKING-THERMO CURV ARROW	EACH	5
22664EN	WATER BLASTING EXISTING STRIPE	LF	1035
21289ED	LONGITUDINAL EDGE KEY	LF	1042

ESTIMATE FOR EARTHWORK
CALCULATIONS IS FOR DESIGN ONLY
Earthwork (CU YD)

Common Excavation	= 671
Common Excavation (Entrances)	= 65
Embankment	= 275
Embankment (Entrances)	= 7

VOLUMES SHOWN FOR INFORMATION ONLY

PAVING SUMMARY

ITEM CODE	ITEM	UNIT	TOTAL PROJECT
0003	CSB ①	TON	400
0100	ASPHALT SEAL AGGREGATE	TON	13
0103	ASPHALT SEAL COAT	TON	2
0214	CL3 ASPHALT BASE 1.00D PG 64-22	TON	590
0307	CL3 ASPHALT SURFACE 0.38B PG 64-22	TON	330
24970EC	ASPHALT MATERIAL FOR TACK NON-TRACKING	TON	1

NOTES:

- ALL ASPHALT MIXTURES SHALL BE ESTIMATED AT 110 LBS. PER SQ. YD. PER INCH OF DEPTH, UNLESS NOTED OTHERWISE.
- ① ESTIMATED AT 115 LBS. PER SQ. YD. PER INCH OF DEPTH.
 - ② ESTIMATED AT 20 LBS. PER SQ. YD. (SIZE NO. 8 OR 9M) TWO APPLICATIONS
 - ③ ESTIMATED AT 2.4 LBS. PER SQ. YD. (TWO APPLICATIONS)
 - ④ BASE AND SURFACE ESTIMATED AT 110 LBS. PER SQ. YD. PER INCH OF DEPTH
 - ⑤ MILLING AND TEXTURING WILL INCLUDE ALL EDGE KEYS, LONGITUDINAL EDGE KEYS, AND MAINLINE MILLING FOR GRADE CORRECTIONS
 - ⑥ CLEARING AND GRUBBING ~ 0.39 AC
 - ⑦ FOR SUBGRADE PREPARATION AS DIRECTED BY THE ENGINEER
 - ⑧ ESTIMATED AT 0.70 LBS. PER SQ. YD.
 - ⑨ TO BE PLACED AND PROGRAMMED AS DIRECTED BY ENGINEER
 - ⑩ TEMPORARY SIGNAL MUST BE ACTUATED

PAVING AREAS

ITEM	TOTAL PROJECT
	S Q . Y D S .
4' CSB	1585
8.25' CL3 ASPHALT BASE 1.00D PG 64-22 ④	1350
1.25' CL3 ASPHALT SURFACE 0.38D PG 64-22 ④	3910
ASPHALT SEAL AGGREGATE (TWO APPLICATIONS) ②	600
ASPHALT SEAL COAT (TWO APPLICATIONS) ③	600
ASPHALT MATERIAL FOR TACK NON-TRACKING ⑧	2680

PIPE DRAINAGE SUMMARY

SHEET NO.	STATION	SKEW	PH LEVEL	MAXIMUM COVER HEIGHT	15" ENTRANCE PIPE	15" CULVERT PIPE	18" CULVERT PIPE	15" PIPE CULVERT HEADWALL	18" PIPE CULVERT HEADWALL	REMARKS
ITEM CODE					440	461	462	1202	1204	
UNIT TO BID						EACH	LF	EACH	EACH	
R3	17+24 RT				38					
R3	18+11.5 RT				38					
R3	18+98 RT				36					
R3	19+99 RT				47					
R3	(KY 242) 16+25						53		2	18" SLOPED & FLARED HEADWALL
R3	(SKEES ROAD) 1+32					44		2		15" SLOPED & FLARED HEADWALL
R3	(SCHOOL ENT.) 16+54					52				
TOTAL PROJECT					159	96	53	2	2	

GENERAL SUMMARY

ITEM CODE	ITEM	UNIT	TOTAL PROJECT
0078	CRUSHED AGGREGATE NO. 2 (FOR STABILIZATION) ⑦	TON	100
2014	BARRICADE-TYPE III	EA	1
2159	TEMP DITCH	LF	525
2160	CLEAN TEMP DITCH	LF	265
2200	ROADWAY EXCAVATION	CU YD	736
2242	WATER	MGAL	15
2429	RIGHT-OF-WAY MONUMENT TYPE I	EA	8
2432	WITNESS POST	EA	3
2545	CLEARING AND GRUBBING ⑥	LS	1
2562	TEMPORARY SIGNS	SO FT	200
2569	DEMOBILIZATION	LS	1
2585	EDGE KEY	LF	70
2603	FABRIC GEOTEXTILE CLASS 2 ⑦	SY	300
2650	MAINTAIN AND CONTROL TRAFFIC	LS	1
2653	LANE CLOSURE	EACH	1
2671	PORTABLE CHANGEABLE MESSAGE SIGN ⑨	EACH	2
2676	MOBILIZATION FOR MILL & TEXT	LS	1
2677	ASPHALT MILLING & TEXTURING ⑤	TON	50
2690	SAFELOADING	CU YD	6.2
2701	TEMP SILT FENCE	LF	525
2703	SILT TRAP TYPE A	EACH	1
2704	SILT TRAP TYPE B	EACH	1
2705	SILT TRAP TYPE C	EACH	1
2706	CLEAN SILT TRAP TYPE A	EACH	1
2707	CLEAN SILT TRAP TYPE B	EACH	1
2708	CLEAN SILT TRAP TYPE C	EACH	1
2726	STAKING	LS	1
4935	TEMP SIGNAL ⑩	LS	1
5950	EROSION CONTROL BLANKET	SO YD	1865
5952	TEMP MULCH	SO YD	1105
5953	TEMP SEEDING AND PROTECTION	SO YD	935
5963	INITIAL FERTILIZER	TON	1
5964	MAINTENANCE FERTILIZER	TON	1
5985	SEEDING & PROTECTION	SO YD	1865
5992	AGRICULTURAL LIMESTONE	TON	1.5
6406	SBM ALUM SHEET SIGNS 0.080 IN	SO FT	12.98
6410	STEEL POST TYPE I	LF	24
2463IEC	BARCODE SIGN INVENTORY	EACH	2
6510	PAVE STRIPING - TEMP PAINT - 4IN	LF	2300
6514	PAVE STRIPING - PERM PAINT - 4IN	LF	5254
6547	PAVE STRIPING - THERMO - YELLOW - 12IN	LF	196
6568	PAVE MARKING-THERMO STOP BAR-24 IN	LF	14
6574	PAVE MARKING-THERMO CURV ARROW	EACH	5
22664EN	WATER BLASTING EXISTING STRIPE	LF	1035
21289ED	LONGITUDINAL EDGE KEY	LF	1042

ESTIMATE FOR EARTHWORK CALCULATIONS IS FOR DESIGN ONLY

Earthwork (CU YD)

Common Excavation	= 671
Common Excavation (Entrances)	= 65
Embankment	= 275
Embankment (Entrances)	= 7

VOLUMES SHOWN FOR INFORMATION ONLY

PAVING SUMMARY

ITEM CODE	ITEM	UNIT	TOTAL PROJECT
0003	CSB ①	TON	400
0100	ASPHALT SEAL AGGREGATE	TON	13
0103	ASPHALT SEAL COAT	TON	2
0214	CL3 ASPHALT BASE 1.00D PG 64-22	TON	590
0307	CL3 ASPHALT SURFACE 0.38B PG 64-22	TON	330
24970EC	ASPHALT MATERIAL FOR TACK NON-TRACKING	TON	1

PAVING AREAS

ITEM	TOTAL PROJECT
	S Q . Y D S .
4" CSB	1585
8.25" CL3 ASPHALT BASE 1.00D PG 64-22 ④	1350
1.25" CL3 ASPHALT SURFACE 0.38D PG 64-22 ④	3910
ASPHALT SEAL AGGREGATE (TWO APPLICATIONS) ②	600
ASPHALT SEAL COAT (TWO APPLICATIONS) ③	600
ASPHALT MATERIAL FOR TACK NON-TRACKING ⑧	2680

NOTES:

- ALL ASPHALT MIXTURES SHALL BE ESTIMATED AT 110 LBS. PER SQ. YD. PER INCH OF DEPTH, UNLESS NOTED OTHERWISE.
- ① ESTIMATED AT 115 LBS. PER SQ. YD. PER INCH OF DEPTH.
 - ② ESTIMATED AT 20 LBS. PER SQ. YD. (SIZE NO. 8 OR 9M) TWO APPLICATIONS
 - ③ ESTIMATED AT 2.4 LBS. PER SQ. YD. (TWO APPLICATIONS)
 - ④ BASE AND SURFACE ESTIMATED AT 110 LBS. PER SQ. YD. PER INCH OF DEPTH
 - ⑤ MILLING AND TEXTURING WILL INCLUDE ALL EDGE KEYS, LONGITUDINAL EDGE KEYS, AND MAINLINE MILLING FOR GRADE CORRECTIONS
 - ⑥ CLEARING AND GRUBBING ~ 0.39 AC
 - ⑦ FOR SUBGRADE PREPARATION AS DIRECTED BY THE ENGINEER
 - ⑧ ESTIMATED AT 0.70 LBS. PER SQ. YD.
 - ⑨ TO BE PLACED AND PROGRAMMED AS DIRECTED BY ENGINEER
 - ⑩ TEMPORARY SIGNAL MUST BE ACTUATED

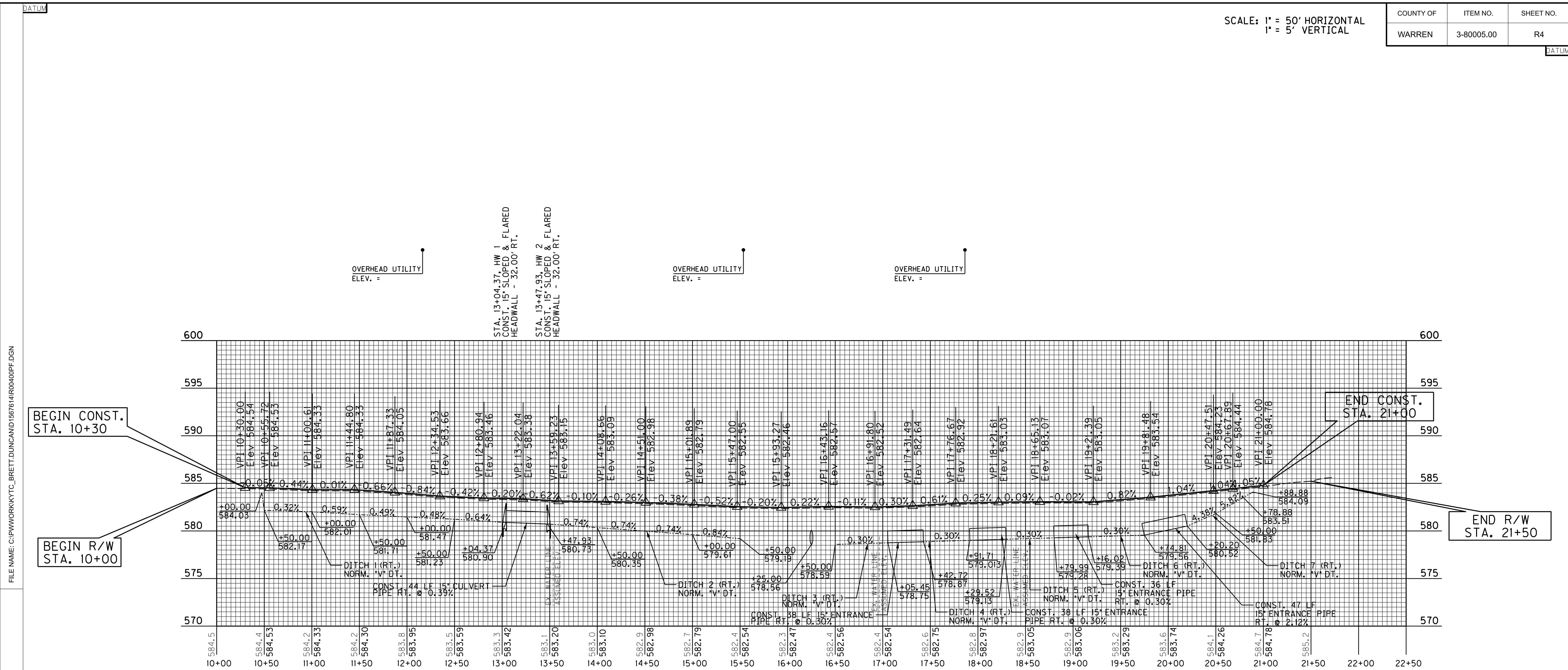
PIPE DRAINAGE SUMMARY

SHEET NO.	STATION	SKEW	PH LEVEL	MAXIMUM COVER HEIGHT	15" ENTRANCE PIPE	15" CULVERT PIPE	18" CULVERT PIPE	15" PIPE CULVERT HEADWALL	18" PIPE CULVERT HEADWALL	REMARKS
ITEM CODE					440	461	462	1202	1204	
UNIT TO BID						EACH	LF	EACH	EACH	
R3	17+24 RT				38					
R3	18+11.5 RT				38					
R3	18+98 RT				36					
R3	19+99 RT				47					
R3	(KY 242) 16+25						53		2	18" SLOPED & FLARED HEADWALL
R3	(SKEES ROAD) 1+32					44		2		15" SLOPED & FLARED HEADWALL
R3	(SCHOOL ENT.) 16+54					52				
TOTAL PROJECT					159	96	53	2	2	

FILE NAME: G:\PWORK\KYTC\BRETT.DUNCAN\1567614\F0020BSU.DGN
 USER: br@h1.duncan
 DATE PLOTTED: May 7, 2021
 GenRoads Designer v10.12.02-RE-SHEET NAME:

SCALE: 1" = 50' HORIZONTAL
1" = 5' VERTICAL

COUNTY OF	ITEM NO.	SHEET NO.
WARREN	3-80005.00	R4



BEGIN CONST. STA. 10+30

BEGIN R/W STA. 10+00

END CONST. STA. 21+00

END R/W STA. 21+50

NOTE: PROFILE IS AN APPROXIMATION. CROSS SECTIONS WERE DEVELOPED BASED ON THE OVERLAY THICKNESS AND PAVEMENT CROSS SLOPES OF THE EXISTING RIGHT DRIVING LANE. SEE CROSS SECTIONS FOR ACTUAL CENTERLINE AND EDGE OF PAVEMENT/SHOULDER ELEVATIONS.

FILE NAME: C:\PIV\WORK\KYTC_BRETT\JUNCAN\15676\14R004\00PF.DGN

USER: david.erickson
DATE PLOTTED: May 21, 2021

E-SHEET NAME:

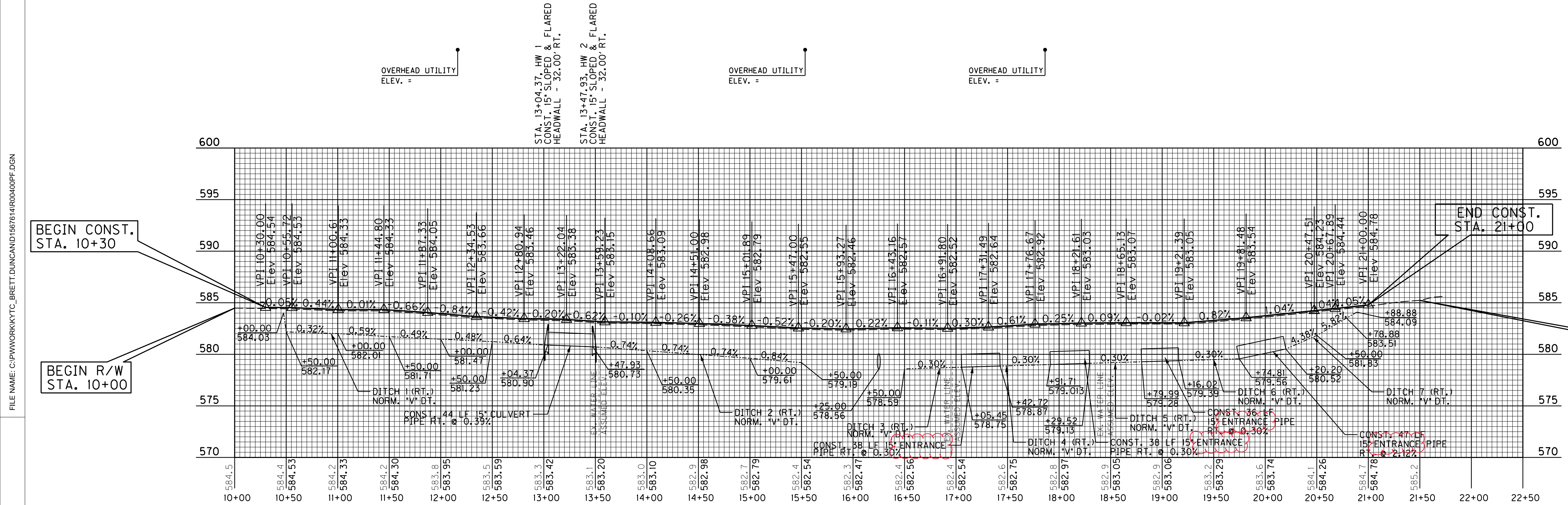
Power InRoads v8.11.9.397

KY 242
PROFILE SHEET
STA. 10+30 TO STA. 21+00

SCALE: 1" = 50' HORIZONTAL
1" = 5' VERTICAL

COUNTY OF	ITEM NO.	SHEET NO.
WARREN	3-80005.00	R4

REVISED 03/19/2024



BEGIN CONST. STA. 10+30

BEGIN R/W STA. 10+00

END CONST. STA. 21+00

END R/W STA. 21+50

NOTE: PROFILE IS AN APPROXIMATION. CROSS SECTIONS WERE DEVELOPED BASED ON THE OVERLAY THICKNESS AND PAVEMENT CROSS SLOPES OF THE EXISTING RIGHT DRIVING LANE. SEE CROSS SECTIONS FOR ACTUAL CENTERLINE AND EDGE OF PAVEMENT/SHOULDER ELEVATIONS.

FILE NAME: C:\P\WORK\KYTC_BRETT\JUNCAN\15676\14R004\00PF.DGN

USER: david.erickson
DATE PLOTTED: May 21, 2021

E-SHEET NAME:

Power InRoads v8.11.9.397